



**2005**  
**BMW Catalog**

## WINGS

**E-36 Lightweight Wing**

4 piece non-adjustable rear wing. Direct bolt on.

**\$650.00**

**\$850.00**



**E-36 Lightweight Wing**

2 piece non-adjustable rear wing. Direct bolt on.

**\$550.00**

**\$700.00**



**E-36 EVO PTG Wing**

4 piece adjustable rear wing. Direct bolt on. T-36 hardened aluminum pitch hardware.

**\$950.00**

**\$1,150.00**



**E-30 EVO Wing**

2 piece adjustable rear wing. Direct bolt on. Carbon fiber wing blade.

**\$550.00**

**\$650.00**

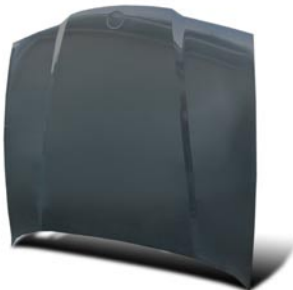


**M3 (E-30) Hood**

Compression bonded edges with a special urethane core construction for light rigid parts. Factory style liners, with hardened steel threaded inserts for attaching hinges and latches.

**\$800.00****\$950.00**

Approx. 12 lbs.

**M3 (E-36) Hood**

Compression bonded edges with a special urethane core construction for light rigid parts. Factory style liners, with hardened steel threaded inserts for attaching hinges and latches.

**\$800.00****\$950.00**

Approx. 15 lbs.

**M3 (E-36) GTR Hood**

The GTR option is a large scale venting cut out. Includes aluminum grill screens. Compression bonded edges with a special urethane core construction for light rigid parts. Factory style liners, with hardened steel threaded inserts for attaching hinges and latches.

**\$999.00****\$1,199.00**

Approx. 15 lbs.

**M3 (E-46) Hood**

Compression bonded edges with a special urethane core construction for light rigid parts. Factory style liners, with hardened steel threaded inserts for attaching hinges and latches.

**\$800.00****\$950.00**

Approx. 15 lbs.

**M3 (E-46) GTR Hood**

The GTR option is a large scale venting cut out. Includes aluminum grill screens. Compression bonded edges with a special urethane core construction for light rigid parts. Factory style liners, with hardened steel threaded inserts for attaching hinges and latches.

**\$999.00****\$1,199.00**

Approx. 15 lbs.

# BMW BODYWORK

FRP

C/F

## M5 (E-39) Hood



Compression bonded edges with a special urethane core construction for light rigid parts. Factory style liners, with hardened steel threaded inserts for attaching hinges and latches.

\$800.00

\$950.00

Approx. 17 lbs.

## M5 (E-39) GTR Hood



The GTR option is a large scale venting cut out. Includes aluminum grill screens. Compression bonded edges with a special urethane core construction for light rigid parts. Factory style liners, with hardened steel threaded inserts for attaching hinges and latches.

\$999.00

\$1,199.00

Approx. 17 lbs.



# BMW BODYWORK

FRP

C/F

## E-36 2003' M3 Bumper

2003' M3 E-46 style front bumper for your 1992 thru 2001 E-36. Includes 55 watt foglights and grill screens. Factory mounting brackets included for a quick and easy installation.

\$650.00

\$850.00

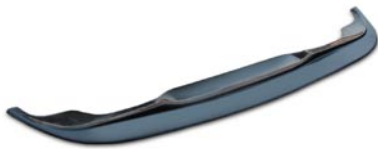


## E-36 2003' M3 Splitter

Optional splitter for above bumper.

\$250.00

\$350.00



# BMW BODYWORK

FRP

C/F

## E-36 M3 Splitter

Fits stock M3 front bumper.

N/A

\$500.00



## E-36 M3 Folded Splitter

2 Part extended length splitter with integrated vertical stabilizers.

\$750.00

\$950.00



## E-36 M3 Race Splitter

Fits M3 race bumper. Adjustable length.

\$275.00

\$375.00



## E-46 M3 Folded Splitter

Fits M3 bumper. Integrated vertical stabilizers. Direct bolt on.

N/A

\$550.00



## E-46 M3 Folded Splitters

2 piece folded splitters for M3 bumper. Direct bolt on.

\$350.00

\$450.00



## E-46 M3 Adjustable Splitter

ACS style 3 piece adjustable splitter for M3 bumper. All Carbon Fiber construction. Direct bolt on. Hardware included.

N/A

\$850.00





# BMW BODYWORK

FRP

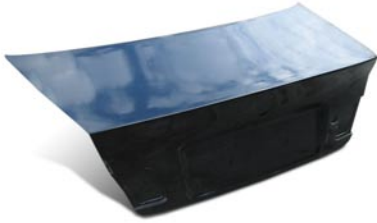
C/F

## E-46 Decklid

Fit stock M3. High quality foam core construction. Factory style sealed liner. Direct bolt on.

\$625.00

\$800.00



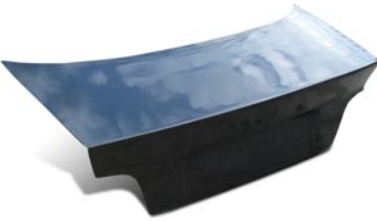
Approx. 10 lbs.

## E-36 Decklid

Fits 2 door. High quality foam core construction. Factory style sealed liner. Direct bolt on.

\$625.00

\$800.00



Approx. 10 lbs.

## E-36 Doors

Fits 2 door. High quality foam core construction. Factory style sealed liner with inner hinges. Complete door NOT a shell. Direct bolt on.

\$950.00

\$1,200.00



Approx. 10 lbs.

**FOR OFF ROAD USE ONLY IN VEHICLES  
EQUIPPED WITH PROPER ROLLCAGES  
FOR DRIVER AND PASSENGER  
PROTECTION.**



# PTG BODY PANELS

Front Fenders  
Quarter Panels  
Side Skirts  
Rear Bumper  
Front Bumper  
Bumper Adapters



**\$2800.00**

